

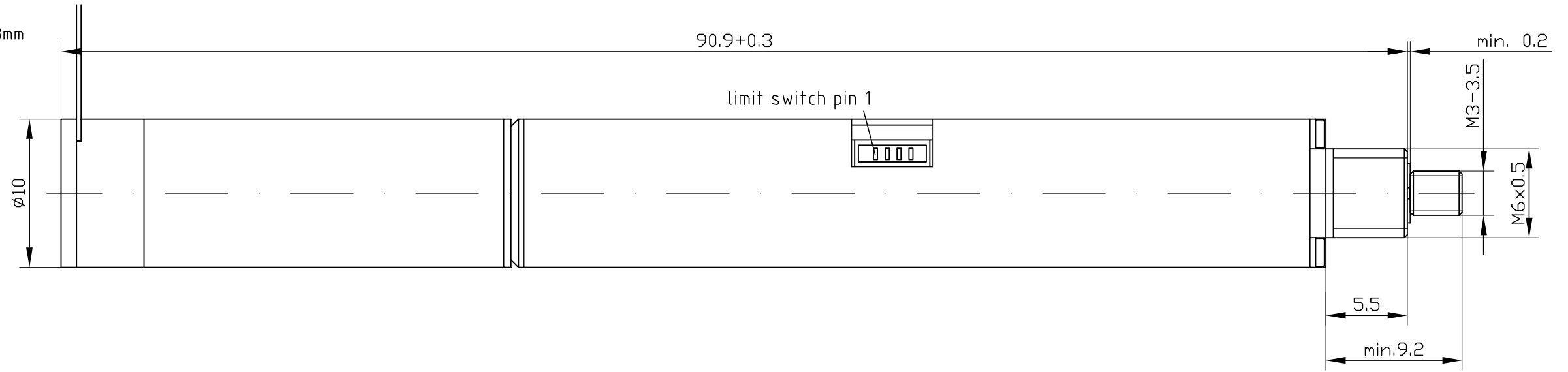
limit switch connector:  
JST SM04B-SURS-TF(LF)

cable:  
JST 04SUR-04SUR-32W150  
AWG32, 4-poles, 150mm, pitch 0.8mm

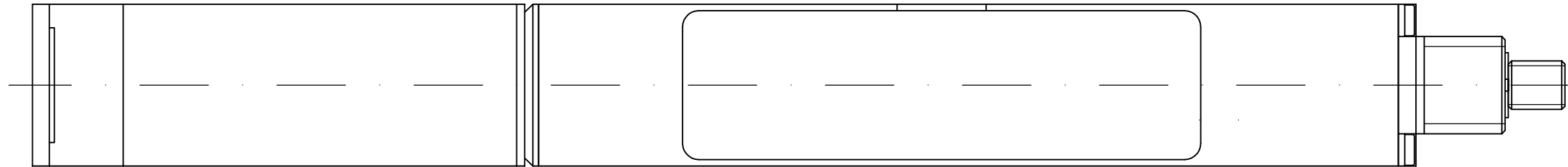
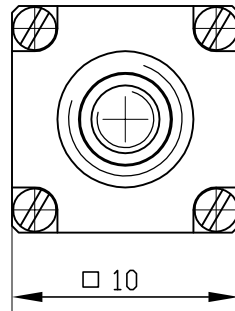
Pin assignment:  
1 neg. limit switch  
2 GND  
3 pos. limit switch  
4 Vcc (+5V...12V)

Motor cable  
Flexprint cable 80±3mm  
Pitch 1mm

Motor cable pin assignment  
1 Motor+  
2 Vcc (+5V)  
3 GND  
4 Motor-  
5 Encoder A\  
6 Encoder A  
7 Encoder B\  
8 Encoder B  
9 n.c.  
10 n.c.



Required motor connector  
FPC Connector, TYCO Electronics 1-84953-0




1 : 1



Subject to change without notice  
Dimensions in mm

Technical data: (preliminary)  
Motor: DC-brush Ø10mm / 12V / 1.5W.  
Encoder: 2 lines, 256 pulses/rev.  
Uni-directional repeatability: ±1µm  
Gearbox: MHD-10-160  
Gear ratio: 160:1  
Pitch: 0.4mm  
max. speed: 0.5 mm/sec  
Travel range: 25mm  
max. Load: 20N (not proofed)  
2 Digital sensors integrated as limit switches useable  
Ambient Temp.: -20...+65°C

<b>Micromotion PROPERTY</b> <small>Diese Zeichnung ist unser geistiges Eigentum und darf ohne unsere Einwilligung weder kopiert, vervielfältigt noch an dritte weitergegeben werden.</small>		<small>This drawing and information herein is our property and is to be used in strict confidence. It shall not be copied or given to any third party without our written permission.</small>		<b>Allgemeintoleranzen / General Tolerances: ISO 2768-f</b> <table border="1"> <tr> <td>0,5</td><td>3</td><td>6</td><td>30</td><td>120</td><td>400</td><td>1000</td><td>2000</td> </tr> <tr> <td>3</td><td>6</td><td>30</td><td>120</td><td>400</td><td>1000</td><td>2000</td><td>4000</td> </tr> <tr> <td>±0.05</td><td>±0.05</td><td>±0.1</td><td>±0.15</td><td>±0.2</td><td>±0.3</td><td>±0.5</td><td>/</td> </tr> </table>		0,5	3	6	30	120	400	1000	2000	3	6	30	120	400	1000	2000	4000	±0.05	±0.05	±0.1	±0.15	±0.2	±0.3	±0.5	/	 <b>Micromotion GmbH</b> An der Fahrt 13 Tel.: +49 (0)6131 66927-0 55124 Mainz Fax: +49 (0)6131 66927-20 Germany	
0,5	3	6	30	120	400	1000	2000																								
3	6	30	120	400	1000	2000	4000																								
±0.05	±0.05	±0.1	±0.15	±0.2	±0.3	±0.5	/																								
Ersatz für / Replacement for:				Maßstab / Scale		(Gewicht / Weight)																									
Ersetzt durch / Replaced by:				3 : 1																											
Datum / Date		Name		Material																											
18.05.09		Deumlich		/																											
Gepr. / Checked		18.05.09		Degen																											
Norm Standard Status				(Benennung / Title)																											
				MLP-10-160-25-DC-SPM0025																											
Zus/Rev		Änderung / Modification		Datum / Date		Name																									
				(Zeichnungsnummer / drawing number)																											
				C-120331.0A-110-001																											
				Blatt/Sheet																											
				1																											
				1 BL/SH																											