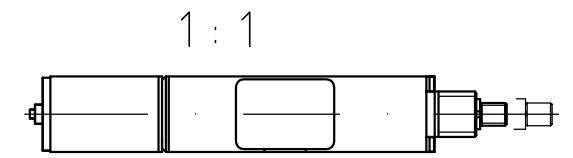
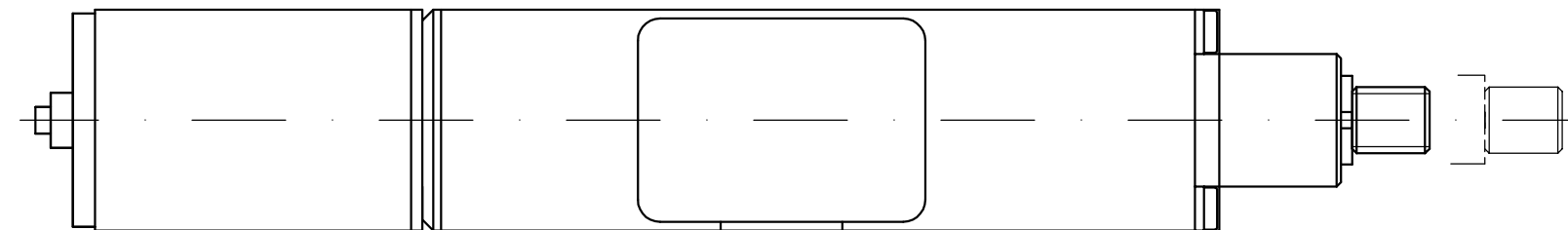
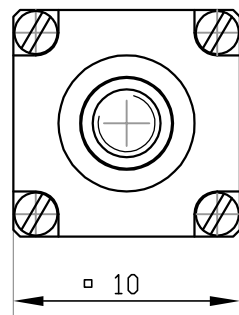
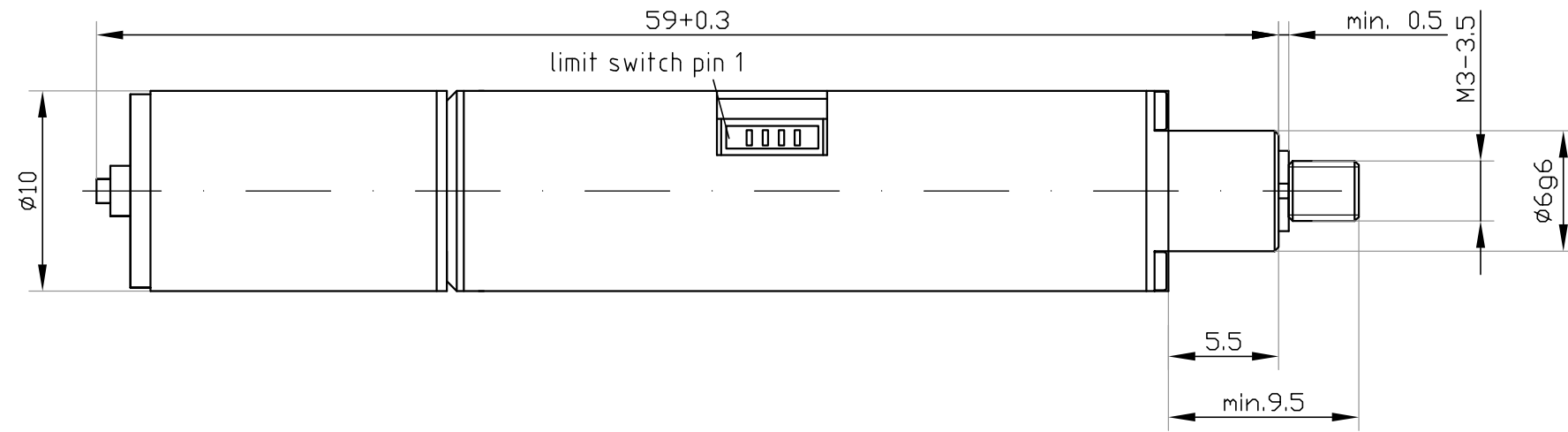


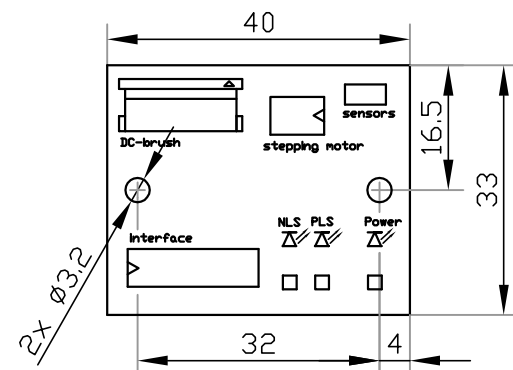
limit switch connector:
JST SM04B-SURS-TF(LF)

cable:
JST 04SUR-04SUR-32W150
AWG32, 4-poles, 150mm, pitch 0.8mm

Pin assignment:
1 neg. limit switch
2 GND
3 pos. limit switch
4 Vcc (+5V...12V)



connector pcb: (1:1)



Technical data: (preliminary)
Motor: Stepper $\phi 10\text{mm}$ / 0.25A / 20Steps/Rev.
Theoretical resolution: $0.5\mu\text{m}$ @ Fullstep
Uni-directional repeatability: $\pm 1\mu\text{m}$
Gearbox: MPG-10-40
Gear ratio: 40:1
Pitch: 0.4mm
max. speed: 2.5 mm/sec
Travel range: 6mm
max. Load: 12N
2 Limit switches
Ambient Temp.: $-20\text{...}+65^\circ\text{C}$

Subject to change without notice
Dimensions in mm

Micromotion PROPERTY <small>Diese Zeichnung ist unser geistiges Eigentum und darf ohne unsere Einwilligung weder kopiert, vervielfältigt noch an dritte weitergegeben werden.</small>		<small>This drawing and information herein is our property and is to be used in strict confidence. It shall not be copied or given to any third party without our written permission.</small>		Allgemeintoleranzen / General Tolerances: ISO 2768-f <table border="1"> <tr> <td>0.5</td><td>3</td><td>6</td><td>30</td><td>120</td><td>400</td><td>1000</td><td>2000</td> </tr> <tr> <td>3</td><td>6</td><td>30</td><td>120</td><td>400</td><td>1000</td><td>2000</td><td>4000</td> </tr> <tr> <td>± 0.05</td><td>± 0.05</td><td>± 0.1</td><td>± 0.15</td><td>± 0.2</td><td>± 0.3</td><td>± 0.5</td><td>/</td> </tr> </table>		0.5	3	6	30	120	400	1000	2000	3	6	30	120	400	1000	2000	4000	± 0.05	± 0.05	± 0.1	± 0.15	± 0.2	± 0.3	± 0.5	/			Micromotion GmbH An der Fahrt 13 Tel.: +49 (0)6131 66927-0 55124 Mainz Fax: +49 (0)6131 66927-20 Germany	
0.5	3	6	30	120	400	1000	2000																										
3	6	30	120	400	1000	2000	4000																										
± 0.05	± 0.05	± 0.1	± 0.15	± 0.2	± 0.3	± 0.5	/																										
Ersatz für / Replacement for:						Maßstab / Scale		(Gewicht / Weight)																									
Ersetzt durch / Replaced by:						2 : 1																											
Datum / Date				Name		Material		(Benennung / Title)																									
Bear. Drawn 19.02.08				Deumlich		/		MLP-10-40-6-ST-SPM0004																									
Gepr. Checked 19.02.08				Degen				(Zeichnungsnummer / drawing number)																									
Norm Standard								C-120242.0A-100-005																									
Status								Blatt/Sheet																									
Zus/Rev Änderung / Modification				Datum/Date		Name		1																									
								1 BL/SH																									